

promotional products



CALENDARS
LOW AS \$0.50 **PG.7**



table contents

awareness promotions	17	events & promotions	12-13
bags & cooler	14-15	magnets	20
calendars	6-7	napkins & more	11
chocolate	18	notepads & window decals	16
office supplies	8-9	ordering information	19
drinkware	10	writing instruments	2-5

Grow Your Business!
Look for these symbols for helpful ideas:



Awareness



Eco-Conscious

Your Promotional Product Catalog provides you with many opportunities to increase the visibility and marketing power of your business. Some great ideas for using these products are:

- Grand Openings
- Company Promotions
- Celebrations
- Business Gifts
- Awards and Incentives
- Employee Recognition
- School Programs
- Advertising and Event Marketing

BIC® solid color pencil

imprint area: 4" W x 3/4" H

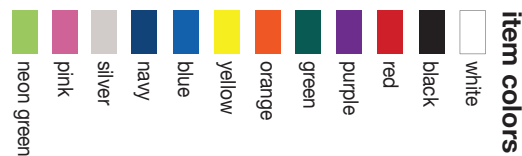
features: gold ferrule, white eraser and #2 graphite lead

imprint colors: white, black, red, yellow, orange, pink, navy, reflex blue, process blue, purple, burgundy, maroon, green, teal, forest green, brown, charcoal, cream, neon green

item number	imprint	500	1000	2500	5000	10000
BK0-VPP-BPS	1 color	\$0.33	0.28	0.25	0.24	0.23
add'l color	max. 2	\$0.14	0.14	0.14	0.14	0.14

(T) Prices effective January 2010
Price per pencil.

Production time: 7 working days



mood pencil *Color changes with the heat of your hands!*

imprint area: 4-1/2" W x 3/4" H

features: black ferrule, black eraser and #2 graphite lead

imprint colors: white, black, red, lt. blue, dk. blue, lt. green, dk. green, orange, maroon, brown, yellow, purple, teal, gold, silver, black is recommended

layout: one color silk-screened imprint up to five lines of copy

item number	imprint	500	1000	2500	5000	10000
BK0-VPP-20550	1 color	\$0.48	0.36	0.33	0.32	0.31

(T) Prices effective January 2010
Price per pencil.

Production time: 7-10 working days

MADE IN THE USA



patriotic pencil

imprint area: 2-1/2" W x 3/4" H

features: stars and stripes design, brass ferrule, pink eraser and #2 graphite lead

imprint colors: red and/or blue

layout: stock stars and stripes design silk-screened in red and blue on white pencil with up to five lines of custom ad copy printed in red and/or blue

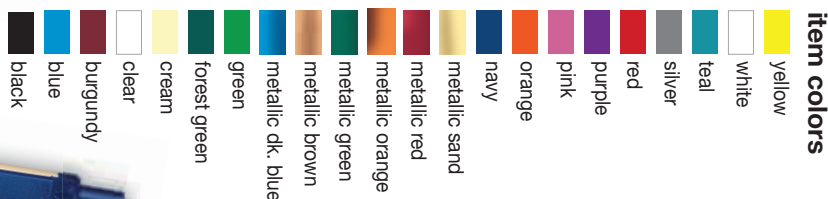
item number	imprint	500	1000	2500	5000	10000
BK0-VPP-20420	1 color	\$0.51	0.35	0.32	0.31	0.30

(T) Prices effective January 2010
Price per pencil.

Production time: 7-10 working days

MADE IN THE USA





BIC® clic stic
BIC® clic stic ice

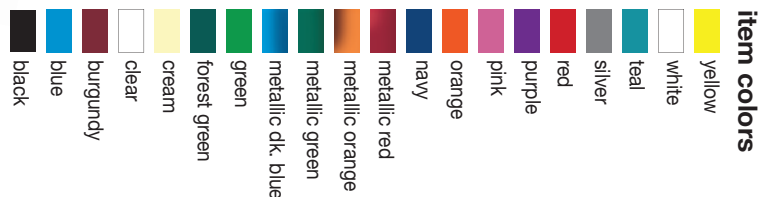
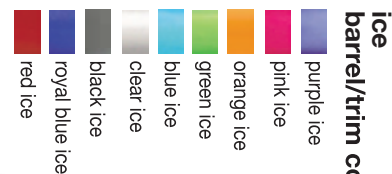


barrel imprint area: 2-1/8" W x 3/4" H
clip imprint area: 1-1/8" W x 5/32" H
ink color: medium point: black, blue, red
 fine point: black, blue (if not specified medium point, black will be used)
item clic stic color: choose one barrel color and one trim color
imprint colors: match trim color or custom color match

item number	imprint	300	500	1000	2500
BK0-VPP-CS	1 color	\$0.77	0.70	0.65	0.62
BK0-VPP-CSI (ice)	1 color	\$0.89	0.82	0.77	0.74
add clip imprint	1 color	\$0.15	0.15	0.15	0.15
each add'l color	max 3	\$0.15	0.15	0.15	0.15
Easy Glide Ink		\$0.08	0.08	0.08	0.08
Fraud Resistant Ink		\$0.08	0.08	0.08	0.08

(T) Prices effective January 2010
 Price per pen.

Production time: 7 working days



BIC® round stic
BIC® round stic ice

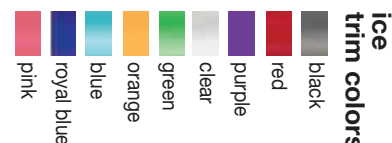


barrel imprint area: 2-1/2" W x 3/4" H
ink color: medium point: black, blue, red
 fine point: black, blue (if not specified medium point, black will be used)
item round stic color: choose one barrel color and one trim color
item round stic ice color: choose one trim color; includes frosted clear barrel
imprint colors: match trim color or custom color match

item number	imprint	500	1000	2500
BK0-VPP-RS	1 color	\$0.50	0.45	0.42
BK0-VPP-RSI (ice)	1 color	\$0.56	0.50	0.47
add'l color	max 2	\$0.15	0.15	0.15
Easy Glide Ink		\$0.08	0.08	0.08

(T) Prices effective January 2010
 Price per pen.

Production time: 7 working days



note: Colors may not be exact. Different products and printing processes cause slight variations in final imprint hue. Every effort will be made to match colors as closely as possible. The colors shown throughout this catalog are not intended to match the PANTONE® Color Standards. PANTONE® is a registered trademark of Pantone®, Inc.



BIC® tri stic BIC® tri stic clear

barrel imprint area: 3" W x 7/32" H per side

clip imprint area: 1-1/8" W x 5/32" H

layout: one line of copy per side, copy and color may be different on each side at no additional charge, price includes a one color barrel imprint on three sides, no screens

ink color: medium point: black, blue, red

fine point: black, blue (if not specified medium point, black will be used)

item (barrel/trim) color: choose one barrel and one trim color

item tri stic color: choose one barrel color; includes clear trim

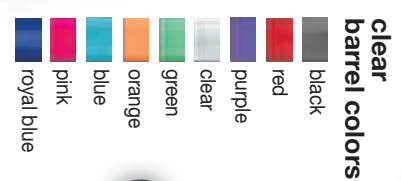
imprint colors: match trim color or custom color match

item number	imprint	300	500	1000	2500
BK0-VPP-TS	1 color	\$0.91	0.84	0.79	0.76
BK0-VPP-TSC (clear)	1 color	\$1.05	0.98	0.93	0.90
add clip imprint	1 color	\$0.15	0.15	0.15	0.15
Easy Glide Ink		\$0.08	0.08	0.08	0.08
Fraud Resistant Ink		\$0.08	0.08	0.08	0.08

(T) Prices effective January 2010

Price per pen.

Production time: 7 working days



BIC® grip roller



barrel imprint area: 1-1/2" W x 5/8" H

cap imprint area: 1-1/2" W x 5/8" H

layout: imprint is on cap unless otherwise specified

ink color: fine point .7mm, black or blue

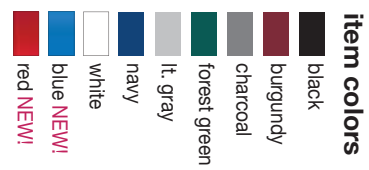
imprint colors: white, black, red, yellow, orange, pink, navy, reflex blue, process blue, purple, burgundy, maroon, green, teal, forest green, brown, charcoal and cream, if cap or barrel imprint is not specified, the imprint will default to barrel color Imprint

item number	imprint	300	500	1000	2500
BK0-VPP-GR	1 color	\$1.22	1.15	1.10	1.07
each add'l color	max 4	\$0.15	0.15	0.15	0.15

(T) Prices effective January 2010

Price per pen.

Production time: 7 working days



action pen

imprint area: 1-3/4" W x 1/2" H

features: click action with rubber grip, screen printed, silver and black trim

layout: logo or four lines of copy

logo: \$31.00 (T), supply print ready artwork

ink color: medium point; black

imprint colors: white, silver, black

item number	imprint	150	250	500
BK0-VPP-59269	1 color	\$1.43	1.18	1.00

(T) Prices effective January 2010

Price per pen .

Production time: 12 working days

crayons by prang



imprint area: 2-1/2" W x 7/8" H

box size: 3-3/4" W x 1-1/2" H

features: crayons are made from soybean oil, four crayons per box (red, blue, yellow and green), crayons cannot be imprinted, certified non-toxic, conforms to ASTM D-4236

stock: custom silk-screened on one side only in one color ink

imprint colors: black, red, light blue, medium blue, dark blue, light green, medium green, dark green, orange, maroon, brown, yellow, purple, teal, gold, athletic gold, silver

item number	stock	288	576	1152	2304	5184
BK0-VPP-01150	Panda	\$1.13	0.78	0.70	0.66	0.64
BK0-VPP-01151	American	\$1.13	0.78	0.70	0.66	0.64
BK0-VPP-01152	Money	\$1.13	0.78	0.70	0.66	0.64

(T) Prices effective January 2010
Price per box.

Production time: 7-10 working days

American
BK0-VPP-01151



Money
BK0-VPP-01152

Panda
BK0-VPP-01150

carabineer highlighter



imprint area: 1-1/2" W x 1/2" H

features: carabineer style clip, ergonomic rubber grip

stock: one color silk-screened imprint on the barrel, highlighter ink color matches the trim color, please order by trim color

barrel color: white

trim color: orange, blue, pink, yellow

imprint colors: black, red, light blue, dark blue, light green, dark green, orange, maroon, brown, yellow, purple, teal, gold, silver

item number	150	250	500	1000	2500
BK0-VPP-11500	\$1.78	1.29	1.10	1.01	0.96

(T) Prices effective January 2010
Price per pen.

Production time: 7-10 working days



hotwalker highlighter



imprint area: 1-1/2" W x 1/4" H

features: click action black ink pen and highlighter in one

stock: triangular shaped laser engraved barrel, highlighter ink color matches the trim color, please order by trim color

layout: up to 2 lines of copy per side, 3 sides

logo: \$31.00 (T), supply print ready artwork

barrel color: silver with accents

trim color: blue, pink, yellow

imprint color: laser engraved in black

item number		150	250	500
BK0-VPP-59564	1 color	\$2.14	1.90	1.86

(T) Prices effective January 2010
Price per highlighter.

Production time: 9-11 working days



stitched appointment calendars

size: closed: 10-1/2" W x 9-7/8" H; open: 10-1/2" W x 17-7/8" H

imprint area: 9-3/4" W x 1-1/2" H

imprint: maximum of 5 lines of copy, approximately 59 characters per line

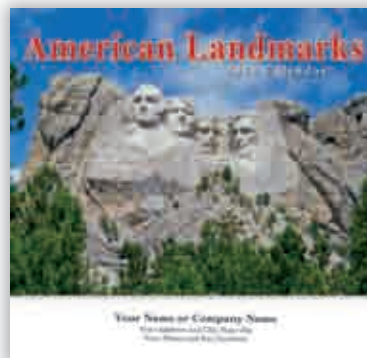
logo: \$42.85 (R), supply print ready artwork

imprint colors: black ink only

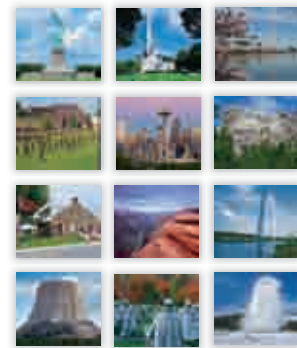
	imprint	100	250	500	750	1000	2500
before 9/1/10	black	\$2.47	1.10	1.10	1.10	1.10	1.10
after 9/1/10	black	\$2.47	1.22	1.22	1.22	1.22	1.22
printed envelopes	black	\$0.53	0.43	0.39	0.37	0.36	0.34
blank envelopes		\$0.27	0.27	0.27	0.27	0.27	0.27

(T) Prices effective January 2010
Price per calendar.

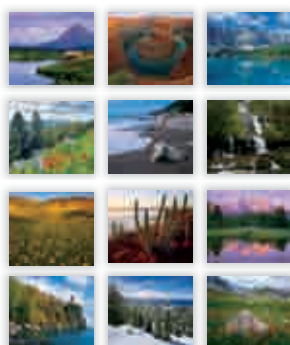
Production time: 7 working days



American Landmarks
BKO-VWS-LM11



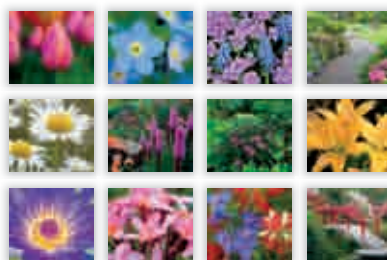
Scenes Across North America
BKO-VWS-SA11



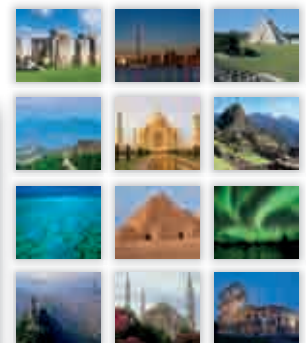
Black & White
BKO-VWS-BS11



Garden Splendor
BKO-VWS-GS11



Wonders of the World
BKO-VWS-WW11



desk calendars

size: 6-1/4" W x 4" H

imprint area: 5-3/4" W x 5/8" H

imprint: maximum of 5 lines of copy, approximately 59 characters per line

logo: \$42.85 (R), supply print ready artwork

imprint colors: black ink only

	imprint	100	250	500	750	1000	2500
before 9/1/10	black	\$2.47	1.10	1.10	1.10	1.10	1.10
after 9/1/10	black	\$2.47	1.22	1.22	1.22	1.22	1.22
printed envelopes	black	\$0.43	0.31	0.27	0.26	0.24	0.22
blank envelopes		\$0.10	0.10	0.10	0.10	0.10	0.10

(T) Prices effective January 2010
Price per calendar.

Production time: 7 working days



Wonders of the World
BKO-VDC-WW11



Garden Splendor
BKO-VDC-GS11



American Landmarks
BK79-VDC-LM11



Scenes Across America
BKO-VDC-SA11



Inspirations
BKO-VDC-TR11

slim line calendars

size: 3-1/2" W x 8-1/2" H

imprint area: seasons 2" W x 1/2" H;

patriotic 2-3/4" W x 1/2" H; fun 2-1/4" W x 3/4" H

stock: white 12 pt. gloss cover C2S

layout: only as shown; blank backside

custom calendars available, call for pricing

allow up to 5 lines of copy

	50	100	250	500	1000
calendar	\$1.05	0.58	0.29	0.28	0.19

(T) Prices effective January 2010
Price per calendar.

Production time: 5 working days

Blank envelopes included

value stic calendars

size: 3" W x 4-3/8" H

imprint area: rectangle 2-3/4" x 2", house 2-1/2" x 1"

phone 2-1/4" x 1-3/8", thank you 3" x 1"

layout: standard calendar pad has 13 month pad, vinyl diecut with adhesive backing

item colors: black, white, red, green, blue, yellow, burgundy, gray

imprint colors: one foil only, choose black, white, gold or pink

item number	150	250	500	1000
BKO-VSC-VAST	\$0.56	0.53	0.51	0.50

(T) Prices effective January 2010

Production time: 7-10 working days

Price per calendar.



Patriotic
BKO-ACC-592N-40



Seasons
BKO-ACC-592M-40

Fun
BKO-ACC-592M-40



611 Phone



604 House



602 Rectangle



616 Thank You

solid and translucent letter opener

NEW!

imprint area: 1-7/8" W x 1" H

features: ergonomic design with a steel blade

logo: supply print ready artwork

item colors: solid: red, granite, blue, white, neon pink, neon green, neon yellow, translucent: green, frosted blue, purple and red

imprint colors: black, white, red, light blue, medium blue, dark blue, light green, medium green, dark green, brown, purple, yellow, teal, orange, maroon, gold, silver

item number	stock	250	500	1000	2500	5000
BK0-VLT-42500	solid	\$1.56	1.24	1.13	1.06	1.04
BK0-VLT-42505	translucent	\$1.56	1.24	1.13	1.06	1.04

(T) Prices effective January 2010
Price per letter opener.

Production time: 7 working days



oval calculator

NEW!

imprint area: 1-3/4" W x 2" H

size: 2-5/8" W x 5" H x 3/8" D

features: slim design, hinged front cover protects keys, soft rubber keys, battery included, individually boxed

imprint colors: black, white, red, light blue, medium blue, dark blue, light green, medium green, dark green, brown, purple, yellow, teal, orange, maroon, gold, silver

item colors: metallic silver case with frosted translucent cover in blue, purple, green, or red

item number	50	100	250	500
BK0-VCL-44610	\$6.04	4.35	3.65	3.42

(T) Prices effective January 2010
Price per calculator.

Production time: 7 working days

magnetic mega clip

NEW!

imprint area: 1-1/4" W x 1-1/4" H

features: comfortable rubber grip, powerful magnet

imprint colors: black, white, red, light blue, medium blue, dark blue, light green, medium green, dark green, brown, purple, yellow, teal, orange, maroon, gold, silver

item colors: translucent red, translucent green, translucent blue and solid white

item number	250	500	1000	2500	5000
BK0-VMC-42210	\$2.08	1.76	1.64	1.58	1.55

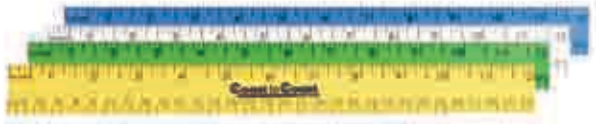
(T) Prices effective January 2010
Price per clip.

Production time: 7 working days





MADE IN THE USA



12" enamel wood ruler **NEW!**

size: 5/32" x 1-1/8"

imprint area: 40 maximum characters and spaces

features: natural wood with clear finish, English and Metric scale

item colors: red, blue, yellow, green, white

unless specified, factory will ship assorted colors

logo: \$41.00 (T) for each 3" in length; maximum height 1/4"

imprint colors: black, red, light blue, dark blue, medium green, dark green, brown, orange, maroon, purple; black is recommended

item number	500	1000	2500	5000	10,000
BK0-VR-95512	\$0.60	0.44	0.41	0.40	0.39

(T) Prices effective January 2010
Price per ruler.

Production time: 7 working days



MADE IN THE USA

12" clear lacquer wood ruler **NEW!**

size: 5/32" x 1-1/8"

imprint area: 40 maximum characters and spaces

features: natural wood with clear lacquer finish, English or Metric scale

English will be used if not specified

logo: \$41.00 (T) for each 3" in length; maximum height 1/2"

imprint colors: black, red, light blue, dark blue, medium green, dark green, brown, orange, maroon, purple; black is recommended

	500	1000	2500	5000	10,000
BK0-VR-92412	\$0.60	0.44	0.41	0.40	0.39

(T) Prices effective January 2010
Price per ruler.

Production time: 7 working days

collapsible can cooler **NEW!**

imprint area: 2-1/2" W x 2-3/4" H, no wrap

item dimensions: 3" W x 4" H x 2-1/2" gusset

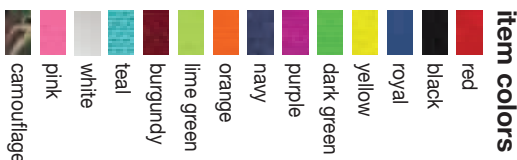
item colors: red, black, royal, yellow, dark green, purple, navy, orange, lime green, burgundy, teal, white, pink, camouflage

imprint colors: white or black

	50	100	250	500	1000
BK0-VCC-CBH	\$3.35	2.26	1.45	1.00	0.85

(T) Prices effective January 2010
Price per cooler.

Production time: 7-10 working days



mugs and sports bottle

traditional c-handle mug

capacity: 11 ounces, ceramic

imprint area: 2-3/4" x 2-1/2" (1 side) **wrap:** 7-3/8" x 2-1/2"

imprint colors: black, blue, brown, gold, green, light blue, maroon, orange, pink, purple, red, tan, teal, white, yellow



item colors

item number	imprint	item color	48	72	144	288	576
BK0-VMG-TRADL	1 color	white	\$5.65	4.68	3.11	2.62	2.38
BK0-VMG-TRADC	1 color	colored	\$6.01	5.05	3.47	2.99	2.75
each add'l color (per piece per color) max 4			\$1.16	0.92	0.92	0.92	0.92

(T) Prices effective January 2010

Price per mug. For close registration, call for price.

Production time: 2-3 weeks plus delivery

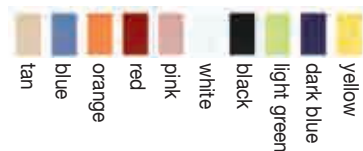


konga mug

capacity: 14 ounces, ceramic

imprint area: 2-1/2" W x 2" H

imprint colors: black, blue, brown, gold, green, lt. blue, maroon, orange, pink, purple, red, tan, teal, white, yellow



item colors

item number	imprint	item color	48	72	144	288	576
BK0-VMG-KONGR	1 color	red	\$8.67	7.70	6.02	5.54	5.30
BK0-VMG-KNOG	1 color	white & colors	\$7.85	6.89	5.21	4.73	4.49
each add'l color (per piece per color) max 4			\$1.16	0.92	0.92	0.92	0.92

(T) Prices effective January 2010

Price per mug. For close registration, call for price.

Production time: 2-3 weeks plus delivery



17 oz mood & smooth stadium cups BIODEGRADABLE

imprint area: 3-7/8" W x 3" H per side

imprint colors: black, red, lt. blue, dk. blue, med. green dk. green, yellow, teal, orange, maroon, gold, silver; black or white is recommended on mood cups

feature: mood cups change color when liquid is added

item number	imprint	item	250	500	1000	2500
BK0-VCU-71117	1 color	mood	\$1.57	1.14	1.02	.95
BK0-VCU-70017	1 color	smooth	\$1.20	0.82	0.71	0.64

(T) Prices effective January 2010

Price per cup.

Production time: 5-10 working days



poly-clear™ gripper bottle

imprint area: 2-1/2" W x 3" H no wrap

size: 2-1/2" W x 8"H

imprint colors: black, yellow, warm red, rubine red, purple, violet, reflex blue, process blue, green, dk. green, pink, brown, teal

bottle/cap colors: red/red, blue/blue, green/green, lime/black, purple/purple, smoke/smoke, clear/clear

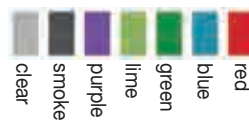
logo: \$25.00 (V)

item number	imprint	50	100	250	500	1000	2500
BK0-VBG-GPC28	1 color	\$4.91	3.91	3.26	2.96	2.58	2.45
2nd color		2nd color	\$0.53	0.43	0.30	0.26	0.20

(T) Prices effective January 2010

Price per bottle.

Production time: 2-3 weeks plus delivery



item colors

napkins and cups

napkins

item dimensions: beverage: 4-3/4" x 4-3/4"
luncheon 6-1/2" x 6-1/2"

imprint area: beverage: 3-1/2" x 3-1/2" and luncheon 4" x 4"

ink colors: bordeaux, black, grey, teal, red, green, mocha, navy, hunter, midnight

foil colors: metallic: gold, silver, red, royal, hunter, penny and nonmetallic: white, black, wine



item	imprint	500	1000	2500	5000	add'l 250
white beverage	ink	\$144.00	182.00	345.00	599.00	25.00
	foil	\$199.00	259.00	469.00	799.00	33.00
color beverage	ink	\$155.00	206.50	385.00	689.00	30.00
	foil	\$209.00	269.00	489.00	879.00	39.00
white luncheon	ink	\$152.50	194.50	379.50	699.50	31.00
	foil	\$213.50	279.00	499.00	889.00	39.00
color luncheon	ink	\$163.50	219.00	419.50	789.50	36.00
	foil	\$223.50	289.00	519.00	969.00	45.00

(R) Prices effective January 2010

Production time: 5 working days

coffee cup sleeves



item dimensions: fits most 8, 12 and 16 ounce paper cups

imprint area: 3-1/2" x 2"

item color: white or kraft

imprint colors: black, yellow, warm red, rubine red, purple, violet, reflex blue, process blue, green, dk. green, pink, brown, teal

item number	imprint	100	250	500	1000	2500	5000
BK0-VJJ-CSK (kraft)	1 color	\$1.59	0.84	0.60	0.43	0.36	0.32
BK0-VJJ-CSW (white)	1 color	\$1.59	0.84	0.60	0.43	0.36	0.32
each add'l color	max 4	\$0.59	0.35	0.33	0.31	0.29	0.27

(T) Prices effective January 2010

Production time: 10 working days

Price per sleeve.



hot/cold paper cups

imprint area: 8 oz: 3" x 2", 12 oz: 3-1/4" x 2-3/4", 16 oz: 3-1/2" x 3"

capacity: 8, 12, 16 ounces

item color: white

imprint colors: black, yellow, warm red, rubine red, purple, violet, reflex blue, process blue, green, dk. green, pink, brown, teal

item number	imprint	item	50	100	250	500	1000	2500	5000
BK0-VFC-C8SC	1 color	8oz	\$2.55	1.52	0.78	0.55	0.40	0.32	0.29
BK0-VFC-C12SC	1 color	12oz	\$2.61	1.58	0.79	0.57	0.44	0.36	0.33
BK0-VFC-C16SC	1 color	16oz	\$2.64	1.65	0.90	0.61	0.51	0.44	0.41
each add'l color	max 4		\$0.67	0.55	0.39	0.33	0.29	0.24	0.22

(T) Prices effective January 2010

Production time: 10 working days

Price per cup.

40 pt. coasters

imprint area: square or circle: 2-3/4" x 2-3/4" (no bleed)

item color: white

imprint colors: black, yellow, warm red, rubine red, purple, violet, reflex blue, process blue, green, dk. green, pink, brown, teal

item number	imprint	shape	100	250	500	1000	2500	5000
BK0-VC-SC40R	1 color	round	\$1.37	0.68	0.46	0.31	0.24	0.20
BK0-VC-SC40S	1 color	square	\$1.37	0.68	0.46	0.31	0.24	0.20
each add'l color (per piece per color)	max 4		\$0.63	0.35	0.28	0.20	0.14	0.13

(T) Prices effective January 2010

Production time: 10 working days

Price per coaster.

BEVERAGE ITEM NUMBER

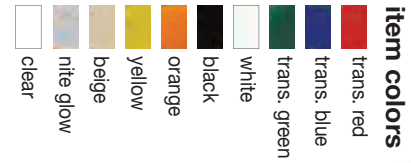
BLACK BK0-VSB-BK
HUNTER BK0-VSB-HG
ECRU BK0-VSB-EC
PURPLE BK0-VSB-PU
ROYAL BK0-VSB-RL
CLARET BK0-VSB-CL
WHITE BK0-VSB-WH
WINE BK0-VSB-WN

LUNCHEON ITEM NUMBER

BLACK BK0-VSL-BK
HUNTER BK0-VSL-HG
ECRU BK0-VSL-EC
PURPLE BK0-VSL-PU
ROYAL BK0-VSL-RL
CLARET BK0-VSL-CL
WHITE BK0-VSL-WH
WINE BK0-VSL-WN



events and promotions



key fob: standard, rectangle, circle

imprint area: standard: 1-5/8" x 1-3/16"; rectangle: 2" x 1" circle: 1-5/8" diameter

imprint colors: black, white, emerald green, forest green, spruce green, light blue, med. blue, yellow, orange, teal, violet, brown, gold, silver, white

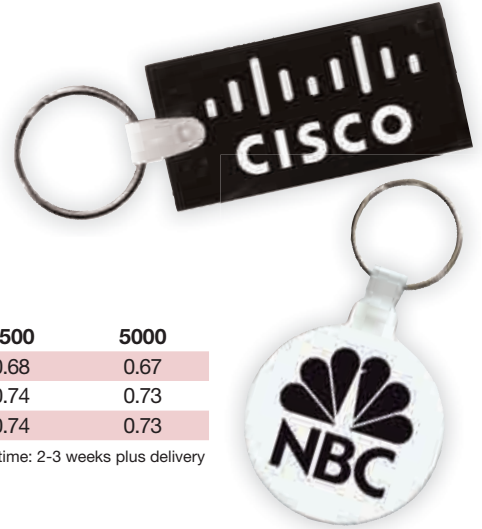
item number	style	size	250	500	1000	2500	5000
BK0-VKF-27060	standard	2-3/16" x 1-7/16"	\$0.96	0.76	0.71	0.68	0.67
BK0-VKF-27053	circle	2" diameter	\$1.04	0.82	0.77	0.74	0.73
BK0-VKF-27070	rectangle	2-7/16" x 1-1/4"	\$1.04	0.82	0.77	0.74	0.73

(T) Prices effective January 2010

Price per key fob.

* orange, yellow, beige, nite glow not available in rectangle or circle shapes

Production time: 2-3 weeks plus delivery



standard latex balloons BIODEGRADABLE

item dimensions: 10" or 12" diameter

imprint area: 5-1/4" D for 10" balloon
5-3/4" W for 12" balloon

layout: one color, one side only

imprint colors: black, white, red, yellow, royal blue, green, brown, orange, pink, purple, burgundy

item number	size	100	250	500	1000
BK0-VBL-10STD	10"	\$1.71	0.76	0.46	0.24
BK0-VBL-12STD	12"	\$1.89	0.83	0.50	0.27

(T) Prices effective January 2010

Price per balloon.

Production time: 2-3 weeks plus delivery



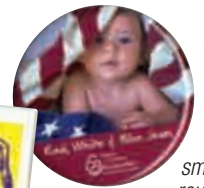
rectangle



large round



square



small round

full color buttons

imprint area: small round: 1-5/8", medium round: 2"

large round: 3-3/8", square 1-7/8", x 1-7/8"

rectangle 1-7/8" x 2-7/8"

imprint colors: full color process

stock: standard safety pin attachment

item number	shape	size	100	250	500	1000	2500	5000	10000
BK0-VBT-070LD	small round	1-3/4"	\$2.36	1.16	0.73	0.46	0.36	0.29	0.27
BK0-VBT-090LD	medium round	2-1/4"	\$2.43	1.26	0.77	0.49	0.38	0.31	0.29
BK0-VBT-140LD	large round	3-1/2"	\$2.66	1.43	0.97	0.58	0.48	0.41	0.38
BK0-VBT-255LD	square	2" x 2"	\$2.76	1.31	0.86	0.60	0.46	0.40	0.38
BK0-VBT-266LD	rectangle	2" x 3"	\$2.80	1.35	0.89	0.63	0.48	0.42	0.40

(T) Prices effective January 2010

Price per button.

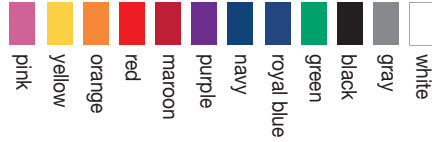
Production time: 10 working days



swivel j hook



bulldog clip



cotton colors
full color
satin colors

cotton lanyards or heavy weight satin lanyards

item dimensions: cotton: 5/8" W x 34" to 35" L and satin: 3/4" W x 34" to 35" L

imprint area: cotton: 1/4" H (one side) and satin: 3/4" H (two sides)

cotton imprint colors: white, gray, black, green, royal blue, navy, purple, maroon, red, orange, yellow, pink

satin imprint colors: full color

item number	imprint	item	50	100	250	500	1000
BK0-VLN-58SH	1 color	cotton swivel hook	\$4.63	3.47	2.77	2.54	2.42
BK0-VLN-58BC	1 color	cotton bulldog clip	\$4.63	3.47	2.77	2.54	2.42
BK0-VLN-HWSH	full color	satin swivel hook	\$5.35	4.18	3.49	3.25	3.14
BK0-VLN-HSBC	full color	satin bulldog clip	\$5.35	4.18	3.49	3.25	3.14

(T) Prices effective January 2010
Price per lanyard.

Production time: 7-10 working days



round badge holder with slide-on clip

item dimensions: 1-1/4" diameter

imprint area: 1" diameter

features: extends up to 35", stationery slide-on clip on back, swivel vinyl snap on strap, lightweight

item colors: translucent available in red, green, blue and purple
solid available in black and white

imprint colors: white, black, red, light blue, medium blue, dark blue, light green, medium green, dark green, brown, yellow, orange, purple, teal, maroon, gold and silver

item number	250	500	1000	2500
BK0-VBH-42820	\$1.63	1.27	1.16	1.09

(T) Prices effective January 2010
Price per holder.

Production time: 10 working days



bloc-aid hand sanitizer spray stick

imprint area: 3/4" H x 2-1/4" W

features: .17 oz., approximately 75 sprays

item colors: translucent plastic bottle with full color custom label

imprint colors: full color process

item number	50	100	250	500	1000
BK0-VHS-HSS	\$5.12	3.96	3.26	3.02	2.91

(T) Prices effective January 2010
Price per stick.

Production time: 10 working days



plastic bags BIODEGRADABLE

item dimensions: small: 9" x 12", medium: 12" x 15" and large: 16" x 18"

imprint area: small: 7" x 7", medium: 10" x 10" and large: 14" x 13"

layout: one side imprint, one color imprint, two color available upon request: call for estimate, screens not available

item color: white, clear, red, yellow, blue, black, ivory, orange

imprint colors: black, brown, burgundy, green, red, teal, reflex blue*, gray, process blue, metallic gold, metallic silver, white

*not recommended on yellow bags

item number	size	item color	500	1000	2500	5000
BK0-VB-912	small	white or clear	\$0.60	0.33	0.20	0.16
BK0-VB-912C	small	color	\$0.62	0.35	0.22	0.18
BK0-VB-1215	medium	white or clear	\$0.76	0.42	0.27	0.21
BK0-VB-1215C	medium	color	\$0.79	0.44	0.29	0.24
BK0-VB-1618	large	white or clear	\$0.99	0.55	0.36	0.30
BK0-VB-1618C	large	color	\$1.05	0.59	0.40	0.34

(T) Prices effective January 2010

Production time: 10 working days plus delivery

Price per bag. Plastic bags are subject to 10% over/under run. We will bill you accordingly.



reusable grocery bag

item dimensions: small: 13" W x 7" Gusset x 14" H and large: 13" W x 10" Gusset x 15" H

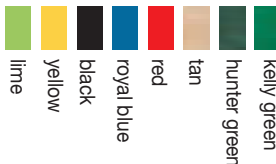
imprint area: large: 7" W x 7" H

and small: 7" W x 7" H

imprint colors: black, white, burgundy, dark purple, navy, royal blue, blue, teal, green, gray, tan, ivory, metallic: gold, silver

special ink charge: \$75.00 (T) per color

bottom insert: recycled plastic bottom insert included



item colors

item number	size	100	250	500	1000	2000
BK0-VGB-13714	small	\$2.22	1.92	1.82	1.77	1.74
BK0-VGB-13101	large	\$2.47	2.16	2.06	2.01	1.98
2nd Side or 2nd Color		\$0.49	0.49	0.49	0.49	0.49

(T) Prices effective January 2010

Production time: 5-10 working days

Price per bag.



small

large

seasonal bags BIODEGRADABLE

item dimensions: 9" W x 12" H

imprint area: maximum 5 lines of copy

imprint colors: black

stock colors: white



item number	imprint	100	200	300	400	500
BK0-VSN-9X12B	blank	\$0.15	0.15	0.15	0.15	0.15

(T) Prices effective January 2010

Production time: 5-10 working days

Price per bag.

Reference design number when numbering.

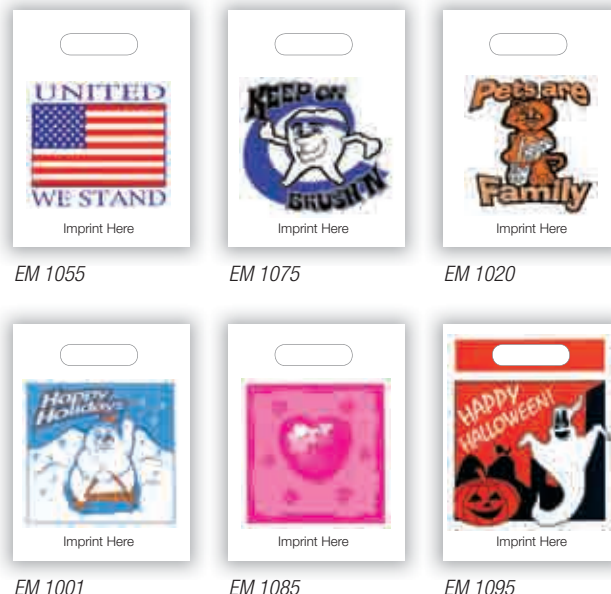
item number	imprint	500	1000	2500	5000	10,000
BK0-VSN-9X12P	black	\$0.38	0.27	0.20	0.18	0.15

(T) Prices effective January 2010

Production time: 5-10 working days

Price per bag.

Reference design number when numbering.



EM 1055

EM 1075

EM 1020

EM 1001

EM 1085

EM 1095

tri-pocket messenger bag



item dimensions: 14" W x 11" H x 3-1/2" D

imprint area: 5-1/2" W x 5" H

item colors: black, red, royal blue

imprint colors: royal, light blue, navy, red, light pink, fuchsia, burgundy, purple, yellow, orange, apple, forest, medium grey, white, metallic silver, metallic gold

material: 600 Denier Poly Canvas



item number	50	100	250	500	1000	2500
BK0-VTB-AP325	\$8.76	7.44	6.64	6.38	6.24	6.16
Additional Color Max. 3	\$2.61	1.80	1.31	1.14	1.06	1.01

(T) Prices effective January 2010
Price per bag.

Production time: 7 working days

drawstring backpack



item dimensions: 15" W x 16" H

item colors: yellow, blue, white, orange, purple and red

features: lightweight, non-woven polypropylene material, tear resistant, water repellent, drawstring closure

item colors: red, yellow, orange, white, blue, purple

imprint area: 11" W x 11" H, one color silk-screened imprint on one side, detailed logos and fine type not recommended

imprint colors: white, black, red, light blue, medium blue, dark blue, light green, medium green, dark green, brown, yellow, orange, purple, teal, maroon, gold and silver

item number	100	250	500	1000
BK0-VBP-59000	\$3.47	2.37	2.10	1.97

(T) Prices effective January 2010
Price per bag.

Production time: 5-10 working days



up to 20% recycled content



the big chill cooler



item dimensions: 8-1/2" W x 7" H x 6-1/4" D

imprint area: 4-1/2" W x 2-1/2" H

imprint colors: royal, light blue, navy, red, light pink, fuchsia, burgundy, purple, yellow, orange, apple, forest, medium grey, white, metallic silver, metallic gold

item trim colors: light blue, charcoal, yellow, royal, apple green, black, red, fuchsia, fern, orange

material: 70 Denier Poly Canvas

item number	50	100	250	500	1000	2500	5000
BK0-VCB-AP760	\$7.00	5.67	4.88	4.61	4.48	4.40	4.37
Additional Color Max. 3	\$2.61	1.80	1.31	1.14	1.06	1.01	1.00

(T) Prices effective January 2010
Price per bag.

Production time: 7 working days



notepads & window decals

short run Post-it® Notes

stock: white, 50 sheets per pad, adhesive on 4" side
imprint area: 4" x 3": 3-5/8" x 2-7/16" and 4" x 6": 3-5/8" x 5-7/16"
imprint colors: black, red or dark blue

FREEBLEEDS!

item number	imprint	size	10	20	40	80	100	160
BK0-IPC-351	1 Color	4" x 3"	\$66.90	81.90	111.90	161.90	183.90	249.90
BK0-IPC-351	2 Color	4" x 3"	\$109.90	129.90	169.90	239.90	269.90	339.90
BK0-IPC-451	1 Color	4" x 6"	\$82.00	109.00	163.90	249.90	285.90	390.90
BK0-IPC-451	2 Color	4" x 6"	\$129.90	165.90	229.90	319.90	359.90	474.90

(P) Prices effective January 2010
 Price per lot, 50 sheets for pad.

Production time: 2-3 working days

item number	imprint	size	6	12	24	48	96
BK0-IPC-351-40	Full Color	4" x 3"	\$79.80	112.80	147.80	197.00	382.00
BK0-IPC-451-40	Full Color	4" x 6"	\$89.95	136.80	192.90	299.80	629.00

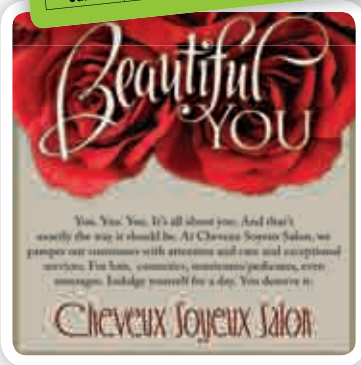
(P) Prices effective January 2010
 Price per lot, 50 sheets for pad.

Production time: 1-2 working days



LAST INSPECTED ON:

January	July	1	2	3	4	5
February	August	6	7	8	9	10
March	September	11	12	13	14	15
April	October	16	17	18	19	20
May	November	21	22	23	24	25
June	December	26	27	28	29	30/31



window decals

item dimensions: 1-1/2" x 2-1/2", 4" x 4"
imprint area: no bleeds available, free white back-up on printed areas for increased readability
item color: white non-adhesive vinyl suitable for indoor use only, provided on rolls
imprint colors: black, red, green, reflex blue, yellow, purple, brown, light blue, burgundy, pink, dark green, navy blue, violet, teal, orange, white, grey, light pink, gold, silver

static cling	imprint	size	500	1000	2000	3000	5000
LK0-SCR-195	1 color	1-1/2" x 2-1/2"	\$277.62	326.65	206.30/m	147.70/m	100.99/m
LK0-SCQ-205	1 color	4" x 4"	\$322.44	379.35	251.64/m	209.35/m	177.26/m
add'l color (add per piece)			\$50.00	50.00	50.00/m	50.00/m	50.00/m

(P) Prices effective January 2010

Production time: 48 hours

static cling	imprint	size	500	1000	2000	3000	5000
LK0-WLR-195	full color	1-1/2" x 2-1/2"	\$296.47	400.00	235.29/m	180.00/m	140.00/m
LK0-WLQ-205	full color	4" x 4"	\$400.00	512.94	329.41/m	315.00/m	230.00/m

(P) Prices effective January 2010

Production time: 48 hours



bumper stickers

item dimensions: 2-3/4" x 15", 3" x 11-1/2"
imprint area: bleeds available, art must extend 1/8" from all edges for the label
item color: white polyolfin laminated for added protection, provided as singles with bend-and-peel end
imprint colors: black, red, green, reflex blue, yellow, purple, brown, light blue, burgundy, pink, dark green, navy blue, violet, teal, orange, white, grey, light pink, gold, silver

bumper sticker	imprint	size	125	250	500	1000
LK0-BSO-358	1 color	4" x 6" Oval	\$202.78	213.45	267.31	339.80
LK0-BSR-1226	1 color	3" x 11-1/2"	\$213.47	224.71	277.10	383.35
add'l color (add per piece)			\$50.00	50.00	50.00	50.00

(P) Prices effective January 2010

Production time: 48 hours

bumper sticker	imprint	size	125	250	500	1000
LK0-BFO-358	full color	4" x 6" Oval	\$418.00	440.00	480.00	600.00
LK0-BFR-1226	full color	3" x 11-1/2"	\$440.32	463.50	515.00	690.00

(P) Prices effective January 2010

Production time: 48 hours

magnetic car sign

NEW!

stock: white stock
magnet thickness: 30 mil
imprint colors: full color process
bleeds: artwork must extend 1/4" from the edge
sets: signs sold in pairs



item number	size	per set
DK0-ZFM-038X18	8" x 18"	\$62.25
DK0-ZFM-0312X24	12" x 24"	\$82.25
DK0-ZFM-0318X24	18" x 24"	\$101.99

(R) Prices effective January 2010
 Price per set.

Production time: 2-5 working days

awareness ribbon label

NEW!

stock: white gloss
imprint area: 2" x 3-3/4"; one color
imprint colors: black, red, green, reflex blue, yellow, purple, brown, light blue, burgundy, pink, dark green, navy blue, violet, teal, orange, white, grey, light pink, gold, silver



item number	250	500	1000	2000	3000	5000
LK0-FTL-1609	\$75.35	79.32	98.89	89.00/m	77.95/m	65.43/m

(P) Prices effective January 2010

Production time: 1-2 working days



wristband

NEW!



stock: silicone wristband
imprint area: 3" W x 5/16" H, up to 2 lines of copy
imprint: laser engraved
item colors: burgundy, light blue, light green, pink, teal, blue, orange, yellow, red, dark blue, purple, black, white, green, blue/white swirl, red/white/blue
font: Script, Times or Modern



item number	50	100	250	500	1000
BK0-VWB-AEWRB	\$4.03	2.80	2.04	1.78	1.66

(T) Prices effective January 2010
 Price per wristband.

Production time: 10-12 working days

ribbon pen

NEW!



features: trim matches ribbon color, colored thumb grip, one silk-screened imprint on the barrel, medium point black ink
barrel color: white
trim colors: pink, yellow, green, purple, teal, blue, and red
imprint area: 1-7/8" W x 19/32" H
imprint colors: white, black, red, light blue, medium blue, dark blue, light green, medium green, dark green, brown, yellow, orange, purple, teal, maroon, gold, silver



item number	250	500	1000	2500
BK0-VPP-15260	\$0.96	0.71	0.66	0.63

(T) Prices effective January 2010
 Price per pen.

Production time: 7-10 working days



ADD A BUSINESS CARD!

custom chocolate

item dimensions: 3-1/4" x 2-3/4" chocolate

features: 1 oz. of chocolate, standard packaging, gold or silver die cut box with matching stretch bow

chocolate: select milk or dark chocolate

packaging: select silver or gold box

custom mold charge: \$120.00 (T)

shipping: additional charge during warm months and/or climates; please call for more information

item number	250	500	1000	2500
BK0-VCH-BCC	\$2.63	2.61	2.60	2.60

(T) Prices effective January 2010
Price per box. Business card not included in price. Production time: 7 working days



custom cookie

item dimensions: 3-1/4" x 2-3/4"

capacity: 1-1/4 ounces

packaged: individually cello-wrapped

chocolate: select milk or dark chocolate

custom mold charge: \$120.00 (T)

shipping: additional charge during warm months and/or climates; please call for more information

item number	250	500	1000	2500
BK0-VCH-CC	\$1.61	1.58	1.57	1.57

(T) Prices effective January 2010
Price per cookie. Production time: 7 working days



custom chocolate molded coins

item dimensions: 1-1/2" diameter

features: kosher certified premium swiss chocolate with custom logo or message debossed into the chocolate and foil of each coin

packaging: milk chocolate available in gold, silver, red or blue foil
dark mint chocolate available in gold foil

custom die charge: \$30.00 (T) per side

stock design: liberty coin, no personalization available

shipping: additional charge during warm months and/or climates; please call for more information

item number	imprint	500	690	1380	4140	11,040
BK0-VCH-C22CU	custom	\$0.42	0.39	0.35	0.31	0.30
BK0-VCH-C22	stock	\$0.30	0.29	0.28	0.27	0.26

(T) Prices effective January 2010

Production time: 7 working days



stock liberty



custom

ordering instructions

camera ready art

1. Include clean, sharp, flat, black and white art produced on photographic paper without screens or shading.
2. Multi-colored designs must be color separated and include registration marks.
3. Do not send faxed art or photocopies. Laser copies must be a minimum of 600 dpi.

we accept files created in the following applications

Acrobat® PDF (<i>Preferred Method</i>)	QuarkXPress®	Adobe InDesign®
Adobe Illustrator®	Adobe Photoshop®	Corel Draw® - PC only

creating your files

1. Vector art with fonts created to outlines is preferred.
2. Create one item sized correctly per document. (Placed graphics and text should be sized at 100%)
3. All supporting graphic file(s) used within your layout must be sent along with the layout file, placed at 100%.
4. Submit black and white bitmap images at 600 dpi; CMYK and grayscale images at 300 dpi, sized at 100%.
5. Anti-aliased bitmap files are not acceptable.
7. Images taken from web sites are not acceptable.
8. We support ".sit", ".sea", ".zip" compressed files.

fonts

Using your illustration program, convert all text "to curves" or "create outlines" in your files. Never use the stylization palette to bold, italicize, add drop shadow to or put outlines on your fonts. If you are using fonts not owned by Navitor®, outlines must be created in all illustration programs before submitting your artwork.

color requirements

Navitor® now has a new "Accurate Color" system. To our channel partners, you can now send your files colored in intended PMS color versus having to color it CMYK. Every effort will be made to print your intended color within acceptable standards.

spot color printing

1. Please submit black and white bitmap images at 600 dpi and grayscale images at 300 dpi for standard spot printing.

full color process printing

1. Every element of the file must be colored with process CMYK colors (no RGB, indexed color, etc.).
2. If RGB or other non-CMYK colors are used in your files, the necessary conversion to CMYK will change the appearance of the colors when we print, sometimes dramatically.
3. Pantone® color - While we are often able to closely reproduce a spot PMS® ink using full color process, PMS® spot colors and process colors are produced using different methods. Therefore, colors produced in full color will differ from Pantone® spot color, sometimes significantly. Please refer to a Solid to Process Color Imaging Guide for color conversions.

proofs

Black and white proofs are available for \$15.00 (R) each. Add 2 days to production time.

special services

If your files require special attention to change or correct, and we are able to make the necessary changes with a quick fix, we will do so for a \$15.00 NET charge. Anything more involved than a quick fix will require additional charges. You will not be contacted unless the charge to fix your file exceeds \$15.00 NET.

submitting your files

1. Once your files have been set up according to these guidelines, give them to your business partner to submit to Navitor®.
2. We can accept your files on 100MB Zip disks, CD-Rs or online at navitor.com.
3. DO NOT send us the only copy of your file. The disk or file could possibly be lost or damaged going through the mail. A copy of the original is preferred.

Please visit navitor.com for further information on submitting files.

magnets

business card magnets

item dimensions: 3-1/2" x 2"

item colors: white with square corners

imprint colors: full color process, full bleeds available

economy four color process with uv coating

item number	stock	20	40	60	80	100	250	500	1000
BK0-BCP-624-40	12 mil	\$3.08	1.62	1.15	0.91	0.75	0.40	0.28	0.23

(R) Prices effective January 2010

Price per magnet.

Production time: 7 working days

standard four color process

item number	stock	250	500	1000	2500	5000	10,000
BK0-VMA-MGBC	20 mil	\$0.43	0.33	0.28	0.25	0.24	0.24
BK0-VMA-MGBC3	30 mil	\$0.46	0.35	0.30	0.27	0.26	0.26

(T) Prices effective January 2010

Price per magnet.

Production time: 7 working days

Magnet orders are subject to a 10% over/under charge. We will bill you accordingly.



shaped magnets

item color: white

imprint color: four color process, full bleeds available

item number	shape	stock	size	250	500	1000	2500	5000
BK0-VM-2x3	oval	20 mil	2" x 3"	\$0.60	0.50	0.45	0.42	0.41
BK0-VM-2x33		30 mil		\$0.73	0.62	0.57	0.54	0.53
BK0-VM-MGSSS	house	20 mil	1-3/4" x 2-3/4"	\$0.47	0.37	0.32	0.29	0.28
BK0-VM-MGSS3		30 mil		\$0.55	0.45	0.40	0.37	0.36
BK0-VM-3	circle	20 mil	3"	\$0.60	0.50	0.45	0.42	0.41
BK0-VM-3C3		30 mil		\$0.73	0.62	0.57	0.54	0.53
BK0-VM-VAN2	van	20 mil	1-5/8" x 3-3/4"	\$0.60	0.50	0.45	0.42	0.41
BK0-VM-VAN3		30 mil		\$0.73	0.62	0.57	0.54	0.53
BK0-VM-3x3	square	20 mil	3" x 3"	\$0.60	0.50	0.45	0.42	0.41
BK0-VM-3x33		30 mil		\$0.73	0.62	0.57	0.54	0.53

(T) Prices effective January 2010

Price per magnet.

Production time: 7 working days

Magnet orders are subject to a 10% over/under charge. We will bill you accordingly.



calendar magnets

item dimensions: 3-7/8" x 3-3/8"

imprint area: four color process on white background, full bleeds available

layout: calendar template printed in black

item number	stock	250	500	1000	2500	5000	10,000
BK0-VM-MGCLL	20 mil	\$0.67	0.56	0.51	0.48	0.47	0.47
BK0-VM-MGCL3	30 mil	\$0.81	0.70	0.65	0.62	0.61	0.61

(T) Prices effective January 2010

Price per magnet.

Production time: 7 working days

Magnet orders are subject to a 10% over/under charge. We will bill you accordingly.

* Calendar orders placed after June 1, 2010 will default to 2011 unless otherwise specified



order your promotional products from...