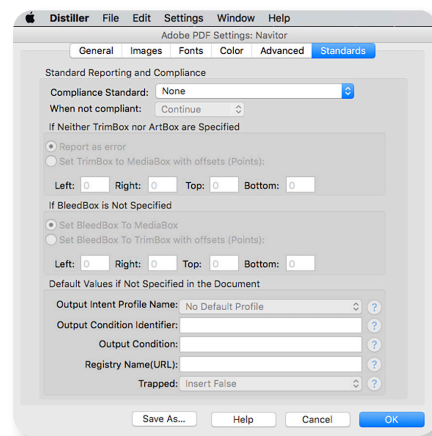
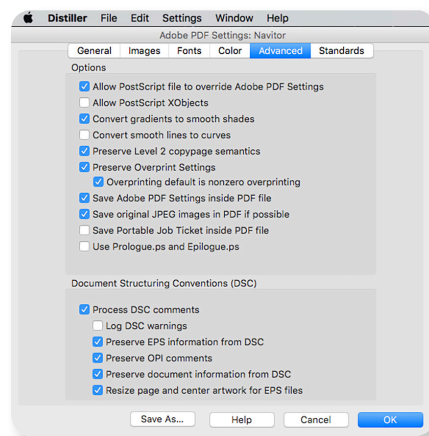
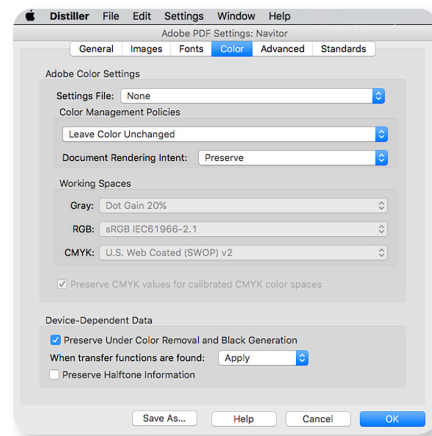
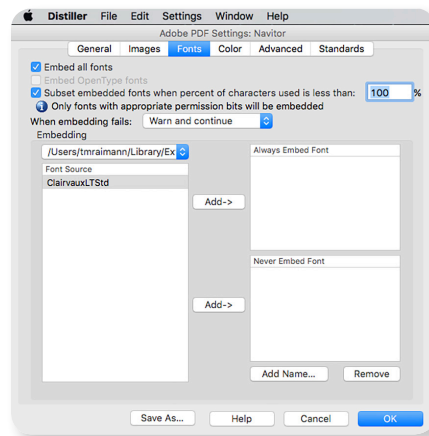
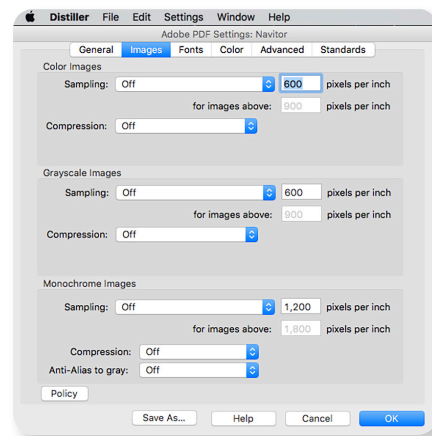
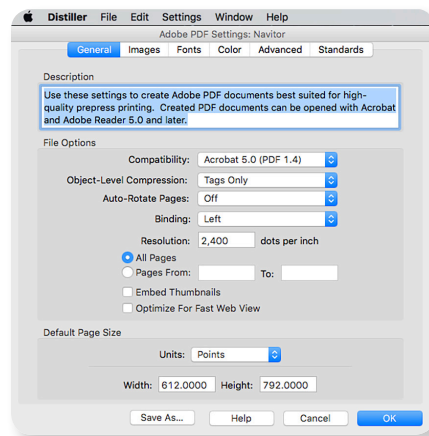


## Adobe® Distiller® Job Options

Set up Adobe Distiller matching these settings or you can download our PDF Job Options from Navitor.com



If you choose to download our [PDF Job Options](https://www.navitor.com/Resource/SubmitPrintReadyPDF.aspx) from the website, they will need to be moved into a specific location before they can be used with any of the Adobe programs. (<https://www.navitor.com/Resource/SubmitPrintReadyPDF.aspx>)

We recommend the location below but you can store them anywhere you prefer:

- PC: C:\ProgramFiles\Adobe\Acrobat9.0\Acrobat\Settings
- Mac: Users/User/Library/ApplicationSupport/Adobe/Adobe PDF/Settings

## All Programs/Products

We recommend following these guidelines to ensure that we have no problems processing your PDF.

### Templates

- Navitor has developed standard templates to assist you in creating print-ready files. Import or place templates in your document as a non-printing reference guide. You can find templates in the Help and Resources section of our website under Guidelines. (<https://www.navitor.com/Resource/Templates.aspx>)

### Document Sizes/Margins

- All documents should have a finished size of the dimensions of the product being ordered and margins need to follow the Electronic Ordering Guidelines in our catalogs
  - Ex: PDF finished size on a business card should be 3½" x 2" and all text should be at least ¼" from the edges of the card

### Bleeds

- All products that may bleed should have a bleed allowance of ⅛" on all 4 sides
  - Ex: PDF finished size on a business card with bleeds should be 3¾" x 2¼"

### Coloring

- Full Color orders must be processed out to CMYK
- Document color mode should be CMYK for all programs/products
- Spot orders should be colored using the correct spot color swatch. Please follow the coloring guidelines listed for spot printing in the Electronic Ordering Guidelines portion of our catalogs. You can also download our swatch palette from Navitor.com.

### Placed Images

- We recommend a minimum resolution of 300 dpi for any Photoshop file or placed image for best quality
- Full Color orders: CMYK Mode
- Embed all placed images (Illustrator, InDesign)

### Text

- Create outlines/convert to curves when possible
- Embed all fonts when outlines/curves are not available

Once you have your file exactly the way you want it, you will need to export your file as a PDF. Based on which program you are using, the steps will be different.

Please proof your PDF file before submitting your order to ensure the file you send is exactly what you want us to print.

**For best printing please flatten all press files.**

**We're here to help!**

Feel free to call us at **866.628.6868** with questions or for more information

# CREATE Print Ready PDFs For Full Color Printing

Online & Catalog Orders



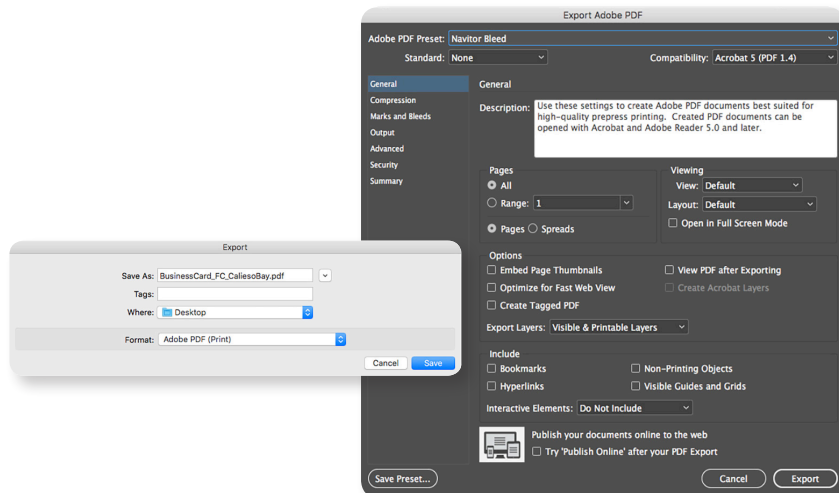
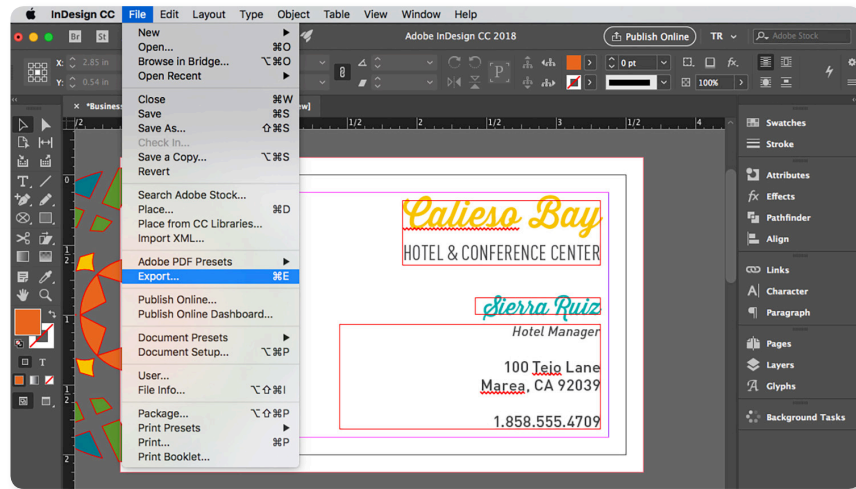
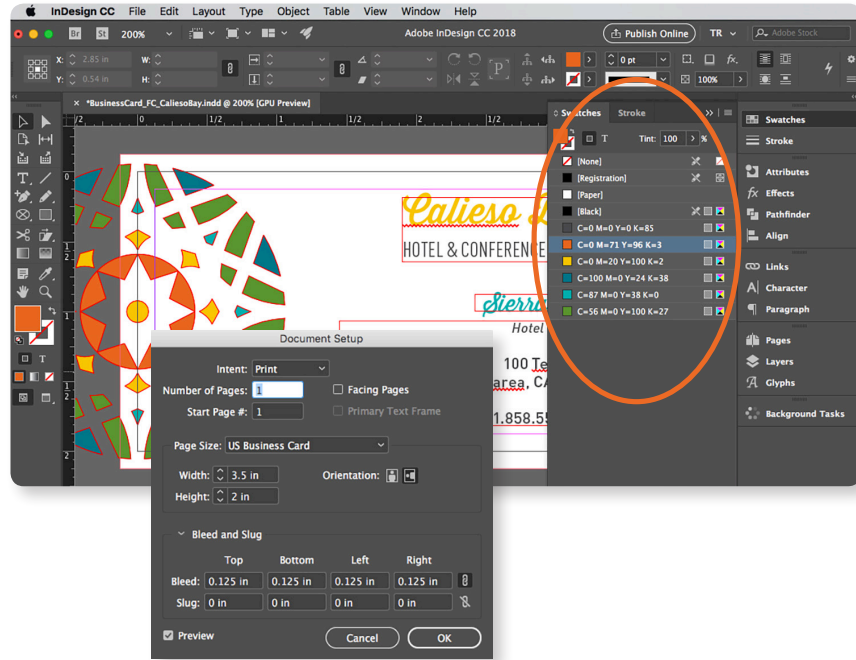
**We're here to help!**

Feel free to call us at **866.628.6868** with questions or for more information

**Navitor**  
the power of us™

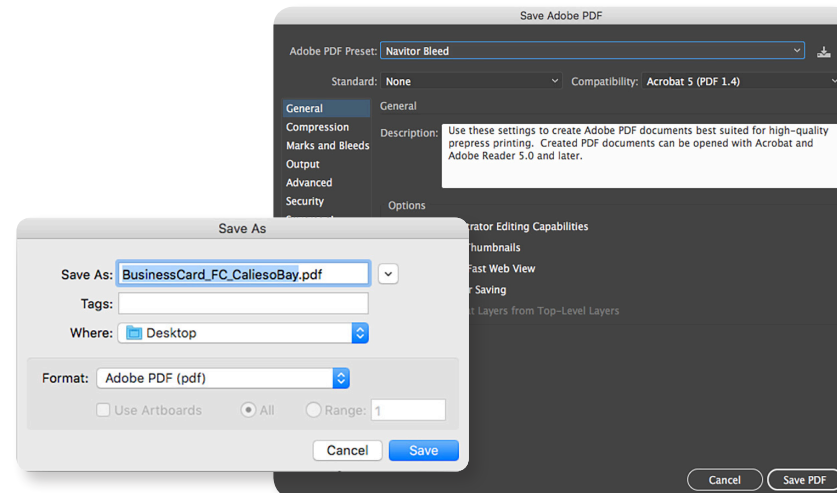
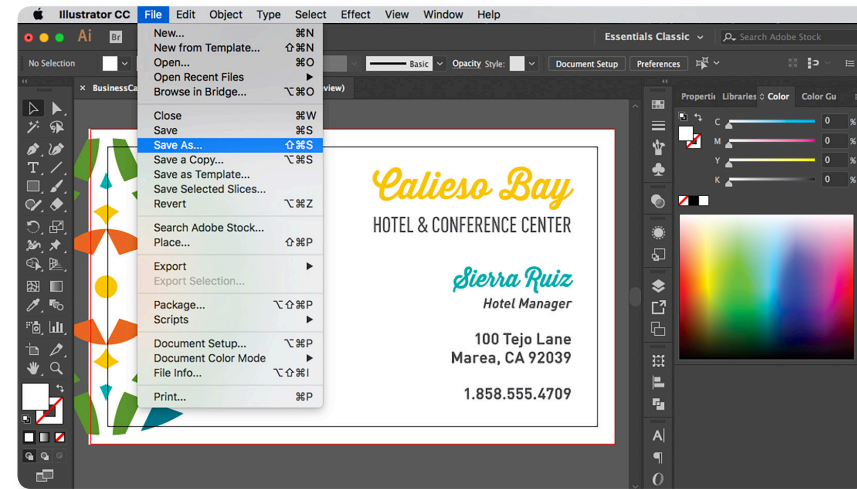
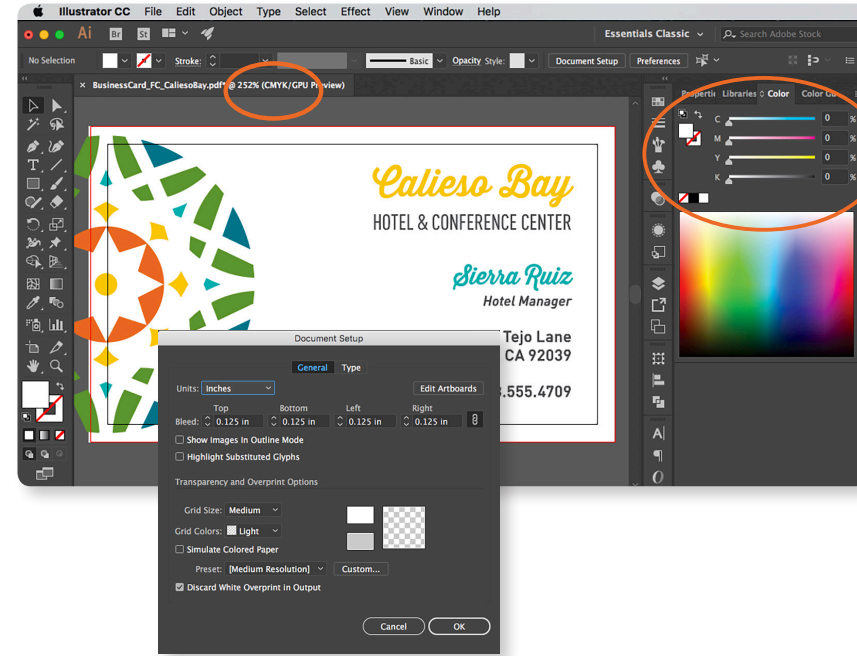
## Adobe® InDesign® CS2 and Up

Ensure the swatches are CMYK color mode. Export the file as a PDF using the Navitor setting to crop the file at the document size. Or, if necessary, use the Navitor Bleed setting to give a bleed allowance of 1/8" on all four sides of your document.



## Adobe® Illustrator®

Ensure the document is in CMYK color mode. Save the file as a PDF using the Navitor setting to crop the file at the document size. Or, if necessary, use the Navitor Bleed setting to give a bleed allowance of 1/8" on all four sides of your document.



## Adobe® Photoshop®

Ensure the document is in CMYK color mode with all layers flattened. If a bleed is needed, add 1/8" to all four sides. Save the file as a PDF, using the Navitor export setting.

