

THERMAL TRANSFER & DIRECT THERMAL LABELS

Print additional information (random weights, nutritional information, barcodes or product ingredients) on pre-printed labels onsite!

Thermal Transfer:

- Uses wax or resin ribbons to print

Direct Thermal:

- Uses heat sensitive paper that turns the print black

Great For:

- Warehouses
- Shipping & Distribution Facilities
- Pharmacies
- Hospitals
- Grocery Stores & Delis

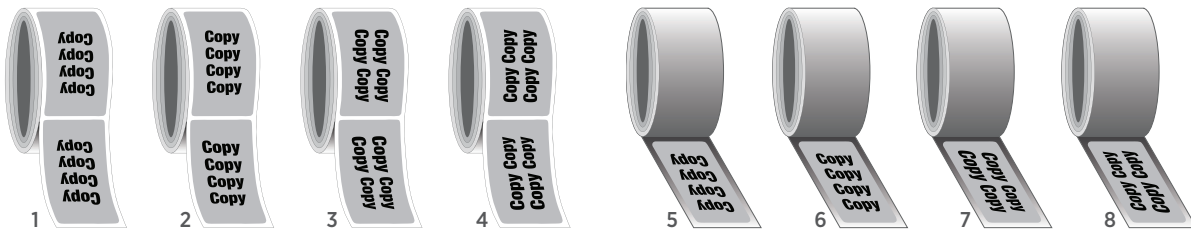
Available Options:

- Blank or printed
- 100's of standard shapes and sizes
- Short to medium runs: 250 - 300,000 labels (can vary by size of the label)
- Variety of adhesives and varnishes
- Finished in rolls or fanfolded
- Consecutive numbering and barcoding



Thermal printers vary, so it is important to know the inner core size, the copy direction and repeat of your label.

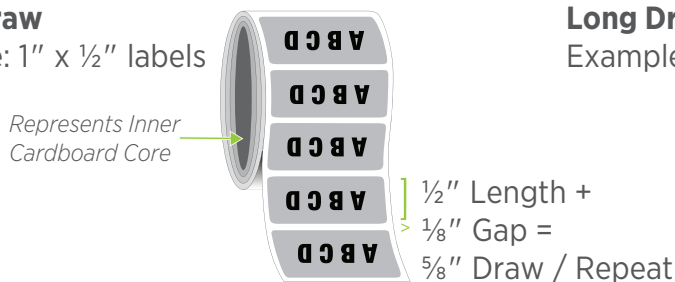
Copy Position (or Unwind): Signifies which direction the copy comes off the roll; positions 5 through 8 are wound in. Please note horizontal vs. vertical.



Draw / Repeat: Refers to the distance from the top edge of one label to the top edge of the next label. The length of the label plus the gap equals the repeat. **Length + Gap = Draw / Repeat**

Short Draw

Example: 1" x 1/2" labels



Long Draw

Example: 1/2" x 1" labels

